

# WIMBLEY

MANAGEMENT



Edward Bayer

Height : 6'0" | Chest : 38" | Waist : 31" | Inseam : 32" | Collar : 15" | Suit : R length / 38" us | Shoe : 9.5 us | Eyes : Blue | Hair : Brown

# WIMBLEY

MANAGEMENT



Edward Bayer

Height : 6'0" | Chest : 38" | Waist : 31" | Inseam : 32" | Collar : 15" | Suit : R length / 38" us | Shoe : 9.5 us | Eyes : Blue | Hair : Brown

# WIMBLEY

MANAGEMENT



Edward Bayer

Height : 6'0" | Chest : 38" | Waist : 31" | Inseam : 32" | Collar : 15" | Suit : R length / 38" us | Shoe : 9.5 us | Eyes : Blue | Hair : Brown

# WIMBLEY

MANAGEMENT



Edward Bayer

Height : 6'0" | Chest : 38" | Waist : 31" | Inseam : 32" | Collar : 15" | Suit : R length / 38" us | Shoe : 9.5 us | Eyes : Blue | Hair : Brown

# WIMBLEY

MANAGEMENT



Edward Bayer

Height : 6'0" | Chest : 38" | Waist : 31" | Inseam : 32" | Collar : 15" | Suit : R length / 38" us | Shoe : 9.5 us | Eyes : Blue | Hair : Brown

# WIMBLEY

MANAGEMENT



Edward Bayer

Height : 6'0" | Chest : 38" | Waist : 31" | Inseam : 32" | Collar : 15" | Suit : R length / 38" us | Shoe : 9.5 us | Eyes : Blue | Hair : Brown

# WIMBLEY

MANAGEMENT

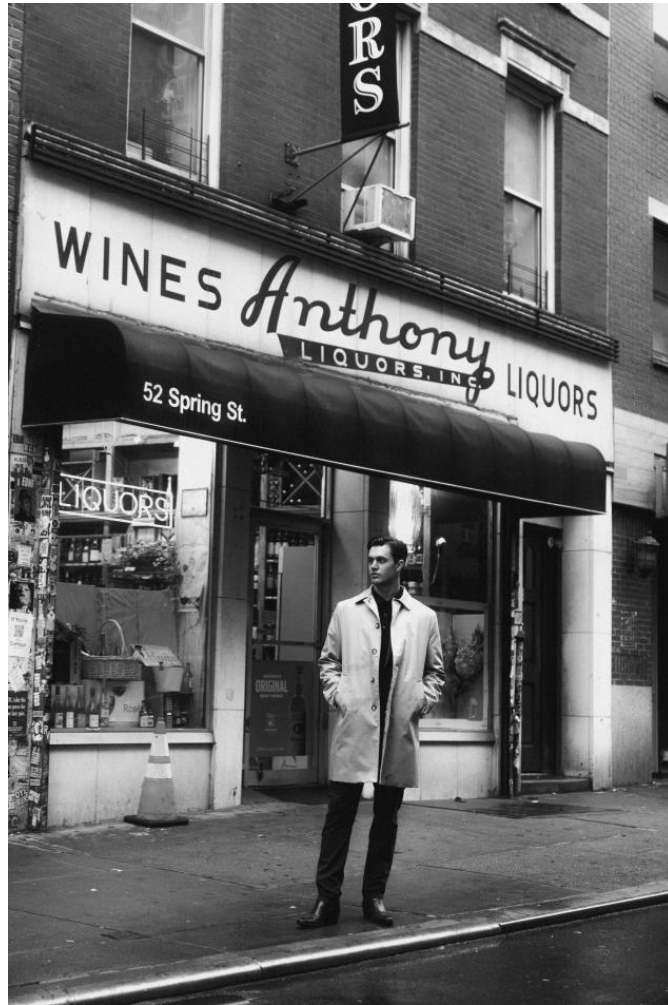


Edward Bayer

Height : 6'0" | Chest : 38" | Waist : 31" | Inseam : 32" | Collar : 15" | Suit : R length / 38" us | Shoe : 9.5 us | Eyes : Blue | Hair : Brown

# WIMBLEY

MANAGEMENT



Edward Bayer

Height : 6'0" | Chest : 38" | Waist : 31" | Inseam : 32" | Collar : 15" | Suit : R length / 38" us | Shoe : 9.5 us | Eyes : Blue | Hair : Brown

# WIMBLEY

MANAGEMENT



Edward Bayer

Height : 6'0" | Chest : 38" | Waist : 31" | Inseam : 32" | Collar : 15" | Suit : R length / 38" us | Shoe : 9.5 us | Eyes : Blue | Hair : Brown

# WIMBLEY

MANAGEMENT

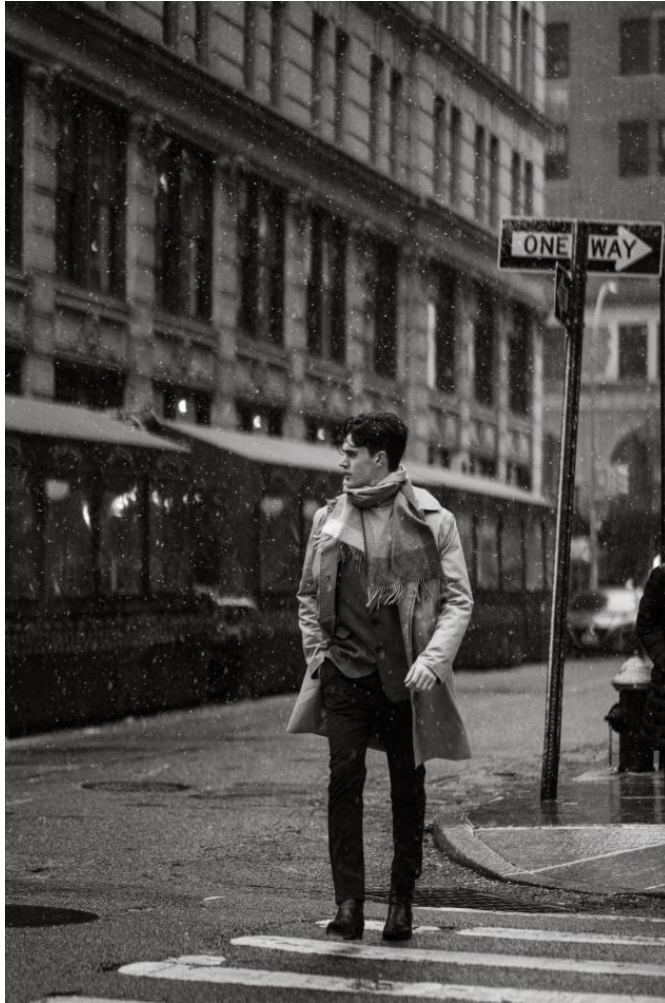


Edward Bayer

Height : 6'0" | Chest : 38" | Waist : 31" | Inseam : 32" | Collar : 15" | Suit : R length / 38" us | Shoe : 9.5 us | Eyes : Blue | Hair : Brown

# WIMBLEY

MANAGEMENT



Edward Bayer

Height : 6'0" | Chest : 38" | Waist : 31" | Inseam : 32" | Collar : 15" | Suit : R length / 38" us | Shoe : 9.5 us | Eyes : Blue | Hair : Brown

# WIMBLEY

MANAGEMENT



Edward Bayer

Height : 6'0" | Chest : 38" | Waist : 31" | Inseam : 32" | Collar : 15" | Suit : R length / 38" us | Shoe : 9.5 us | Eyes : Blue | Hair : Brown

# WIMBLEY

MANAGEMENT



Edward Bayer

Height : 6'0" | Chest : 38" | Waist : 31" | Inseam : 32" | Collar : 15" | Suit : R length / 38" us | Shoe : 9.5 us | Eyes : Blue | Hair : Brown

# WIMBLEY

MANAGEMENT



Edward Bayer

Height : 6'0" | Chest : 38" | Waist : 31" | Inseam : 32" | Collar : 15" | Suit : R length / 38" us | Shoe : 9.5 us | Eyes : Blue | Hair : Brown

# WIMBLEY

MANAGEMENT



Edward Bayer

Height : 6'0" | Chest : 38" | Waist : 31" | Inseam : 32" | Collar : 15" | Suit : R length / 38" us | Shoe : 9.5 us | Eyes : Blue | Hair : Brown

# WIMBLEY

MANAGEMENT



**Edward Bayer**

Height : 6'0" | Chest : 38" | Waist : 31" | Inseam : 32" | Collar : 15" | Suit : R length / 38" us | Shoe : 9.5 us | Eyes : Blue | Hair : Brown

# WIMBLEY

MANAGEMENT



**Edward Bayer**

Height : 6'0" | Chest : 38" | Waist : 31" | Inseam : 32" | Collar : 15" | Suit : R length / 38" us | Shoe : 9.5 us | Eyes : Blue | Hair : Brown

# WIMBLEY

MANAGEMENT

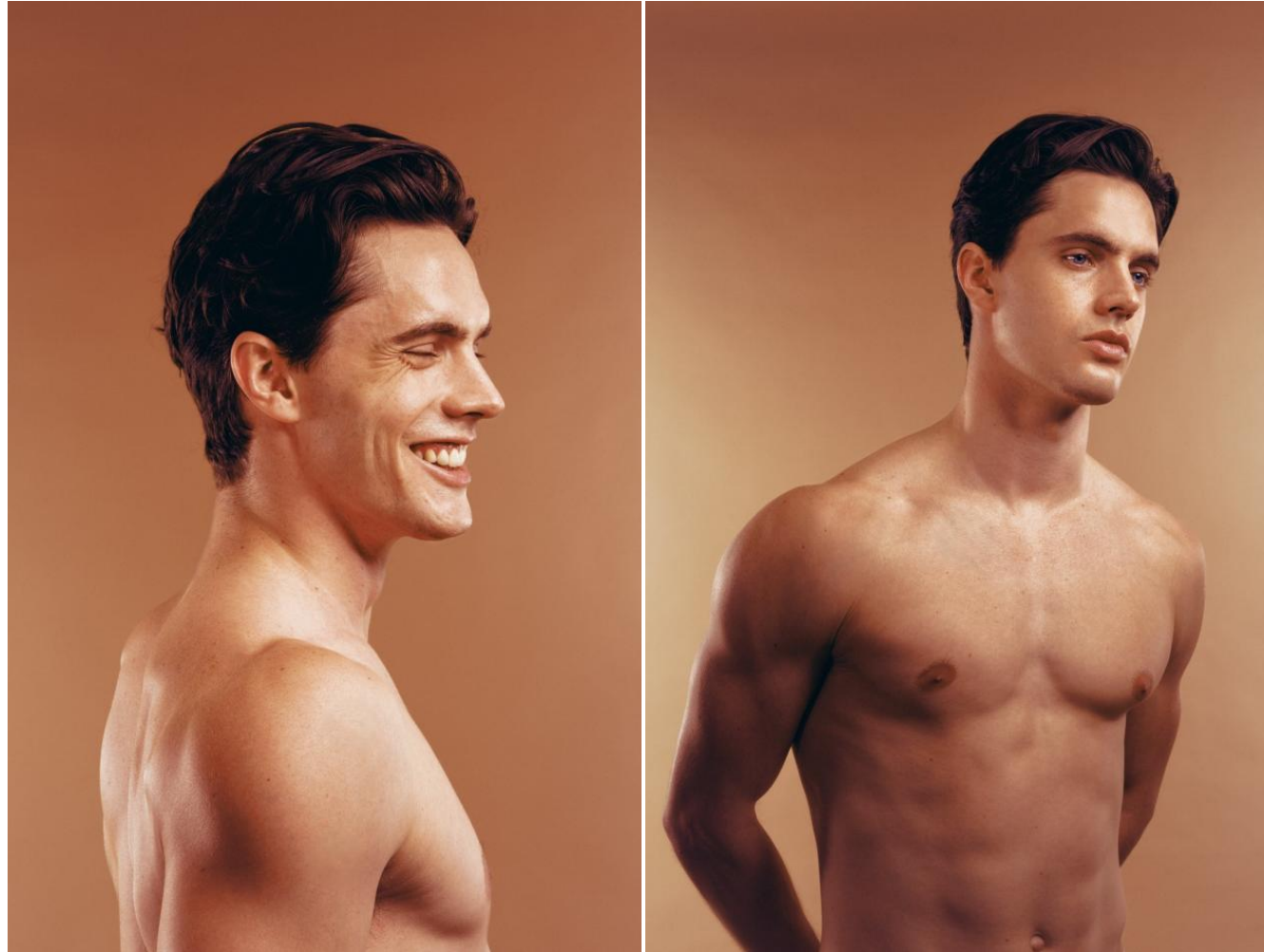


Edward Bayer

Height : 6'0" | Chest : 38" | Waist : 31" | Inseam : 32" | Collar : 15" | Suit : R length / 38" us | Shoe : 9.5 us | Eyes : Blue | Hair : Brown

# WIMBLEY

MANAGEMENT



Edward Bayer

Height : 6'0" | Chest : 38" | Waist : 31" | Inseam : 32" | Collar : 15" | Suit : R length / 38" us | Shoe : 9.5 us | Eyes : Blue | Hair : Brown

# WIMBLEY

MANAGEMENT



Edward Bayer

Height : 6'0" | Chest : 38" | Waist : 31" | Inseam : 32" | Collar : 15" | Suit : R length / 38" us | Shoe : 9.5 us | Eyes : Blue | Hair : Brown