

WIMBLEY

MANAGEMENT



Ken Tamoto

Height : 6'1" | Chest : 37" | Waist : 32" | Inseam : 32" | Collar : 15" | Suit : R length / 40" us | Shoe : 11 us | Eyes : Brown | Hair : Black

WIMBLEY

MANAGEMENT



Ken Tamoto

Height : 6'1" | Chest : 37" | Waist : 32" | Inseam : 32" | Collar : 15" | Suit : R length / 40" us | Shoe : 11 us | Eyes : Brown | Hair : Black

WIMBLEY

MANAGEMENT



Ken Tamoto

Height : 6'1" | Chest : 37" | Waist : 32" | Inseam : 32" | Collar : 15" | Suit : R length / 40" us | Shoe : 11 us | Eyes : Brown | Hair : Black

WIMBLEY

MANAGEMENT



Ken Tamoto

Height : 6'1" | Chest : 37" | Waist : 32" | Inseam : 32" | Collar : 15" | Suit : R length / 40" us | Shoe : 11 us | Eyes : Brown | Hair : Black

WIMBLEY

MANAGEMENT



Ken Tamoto

Height : 6'1" | Chest : 37" | Waist : 32" | Inseam : 32" | Collar : 15" | Suit : R length / 40" us | Shoe : 11 us | Eyes : Brown | Hair : Black

WIMBLEY

MANAGEMENT



Ken Tamoto

Height : 6'1" | Chest : 37" | Waist : 32" | Inseam : 32" | Collar : 15" | Suit : R length / 40" us | Shoe : 11 us | Eyes : Brown | Hair : Black

WIMBLEY

MANAGEMENT

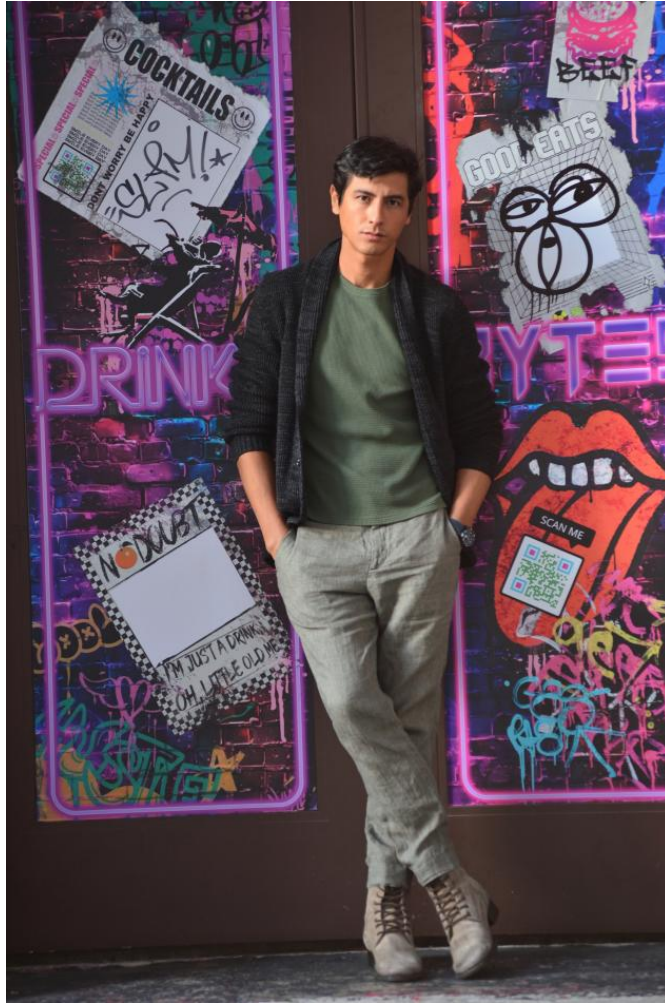


Ken Tamoto

Height : 6'1" | Chest : 37" | Waist : 32" | Inseam : 32" | Collar : 15" | Suit : R length / 40" us | Shoe : 11 us | Eyes : Brown | Hair : Black

WIMBLEY

MANAGEMENT



Ken Tamoto

Height : 6'1" | Chest : 37" | Waist : 32" | Inseam : 32" | Collar : 15" | Suit : R length / 40" us | Shoe : 11 us | Eyes : Brown | Hair : Black

WIMBLEY

MANAGEMENT



Ken Tamoto

Height : 6'1" | Chest : 37" | Waist : 32" | Inseam : 32" | Collar : 15" | Suit : R length / 40" us | Shoe : 11 us | Eyes : Brown | Hair : Black

WIMBLEY

MANAGEMENT



Ken Tamoto

Height : 6'1" | Chest : 37" | Waist : 32" | Inseam : 32" | Collar : 15" | Suit : R length / 40" us | Shoe : 11 us | Eyes : Brown | Hair : Black

WIMBLEY

MANAGEMENT



Ken Tamoto

Height : 6'1" | Chest : 37" | Waist : 32" | Inseam : 32" | Collar : 15" | Suit : R length / 40" us | Shoe : 11 us | Eyes : Brown | Hair : Black

WIMBLEY

MANAGEMENT



MORE THAN
85% OF MEN
WILL EXPERIENCE THINNING
HAIR BY AGE 50

Our physician-led
formulas are here for you.

REVITALASH[®]
cosmetics

THICKENING
SHAMPOO
with Keratin & Argan Oil

Model is actual RevitaLash® Cosmetics user.

Ken Tamoto

Height : 6'1" | Chest : 37" | Waist : 32" | Inseam : 32" | Collar : 15" | Suit : R length / 40" us | Shoe : 11 us | Eyes : Brown | Hair : Black

WIMBLEY

MANAGEMENT



Ken Tamoto

Height : 6'1" | Chest : 37" | Waist : 32" | Inseam : 32" | Collar : 15" | Suit : R length / 40" us | Shoe : 11 us | Eyes : Brown | Hair : Black

WIMBLEY

MANAGEMENT



Ken Tamoto

Height : 6'1" | Chest : 37" | Waist : 32" | Inseam : 32" | Collar : 15" | Suit : R length / 40" us | Shoe : 11 us | Eyes : Brown | Hair : Black

WIMBLEY

MANAGEMENT

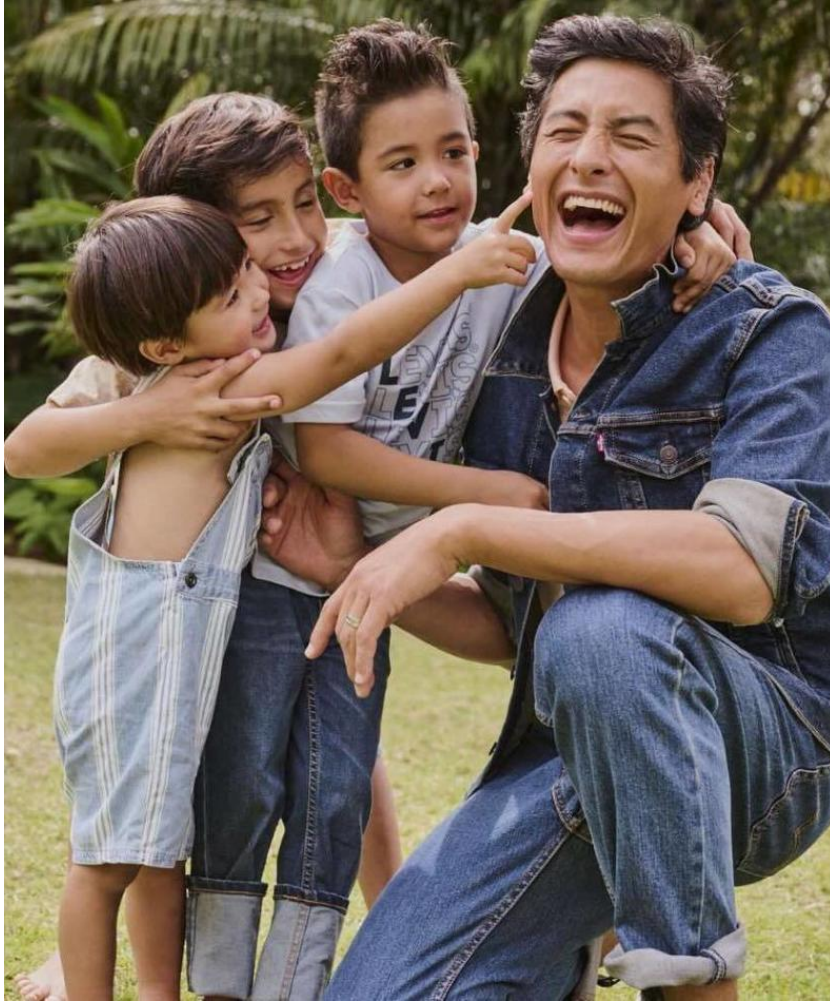


Ken Tamoto

Height : 6'1" | Chest : 37" | Waist : 32" | Inseam : 32" | Collar : 15" | Suit : R length / 40" us | Shoe : 11 us | Eyes : Brown | Hair : Black

WIMBLEY

MANAGEMENT



Ken Tamoto

Height : 6'1" | Chest : 37" | Waist : 32" | Inseam : 32" | Collar : 15" | Suit : R length / 40" us | Shoe : 11 us | Eyes : Brown | Hair : Black

WIMBLEY

MANAGEMENT



Ken Tamoto

Height : 6'1" | Chest : 37" | Waist : 32" | Inseam : 32" | Collar : 15" | Suit : R length / 40" us | Shoe : 11 us | Eyes : Brown | Hair : Black

WIMBLEY

MANAGEMENT



Ken Tamoto

Height : 6'1" | Chest : 37" | Waist : 32" | Inseam : 32" | Collar : 15" | Suit : R length / 40" us | Shoe : 11 us | Eyes : Brown | Hair : Black

WIMBLEY

MANAGEMENT



Ken Tamoto

Height : 6'1" | Chest : 37" | Waist : 32" | Inseam : 32" | Collar : 15" | Suit : R length / 40" us | Shoe : 11 us | Eyes : Brown | Hair : Black