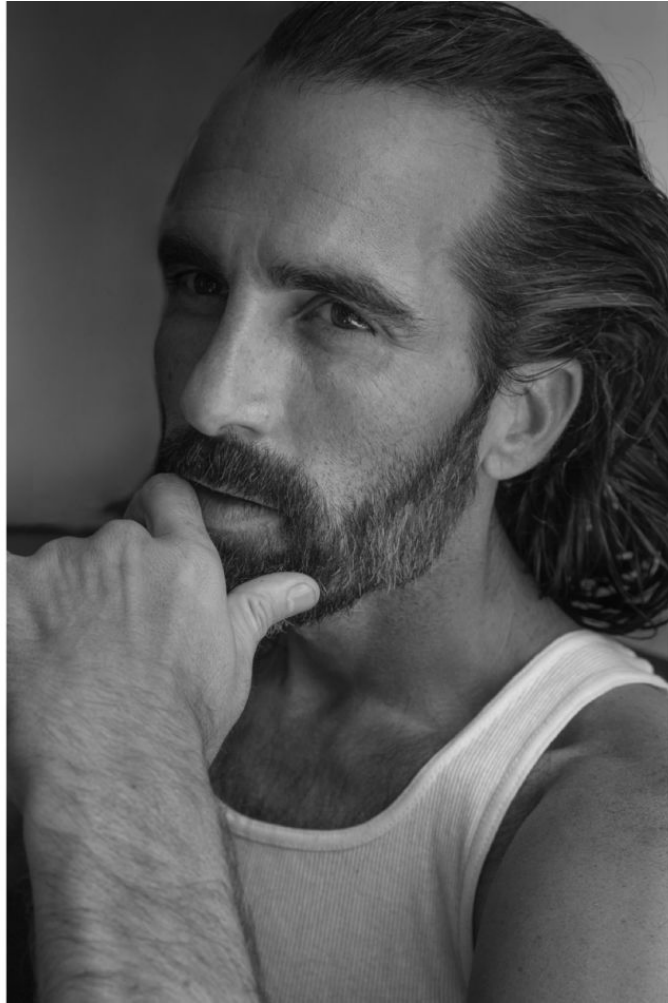


WIMBLEY

MANAGEMENT



Michael O' Connor

Height : 6'3" | Waist : 32" | Inseam : 32" | Collar : 16" | Suit : L length / 40" us | Shoe : 13 us | Eyes : Brown | Hair : Brown

WIMBLEY

MANAGEMENT



Michael O' Connor

Height : 6'3" | Waist : 32" | Inseam : 32" | Collar : 16" | Suit : L length / 40" us | Shoe : 13 us | Eyes : Brown | Hair : Brown

WIMBLEY

MANAGEMENT



Michael O' Connor

Height : 6'3" | Waist : 32" | Inseam : 32" | Collar : 16" | Suit : L length / 40" us | Shoe : 13 us | Eyes : Brown | Hair : Brown

WIMBLEY

MANAGEMENT



Michael O' Connor

Height : 6'3" | Waist : 32" | Inseam : 32" | Collar : 16" | Suit : L length / 40" us | Shoe : 13 us | Eyes : Brown | Hair : Brown

WIMBLEY

MANAGEMENT

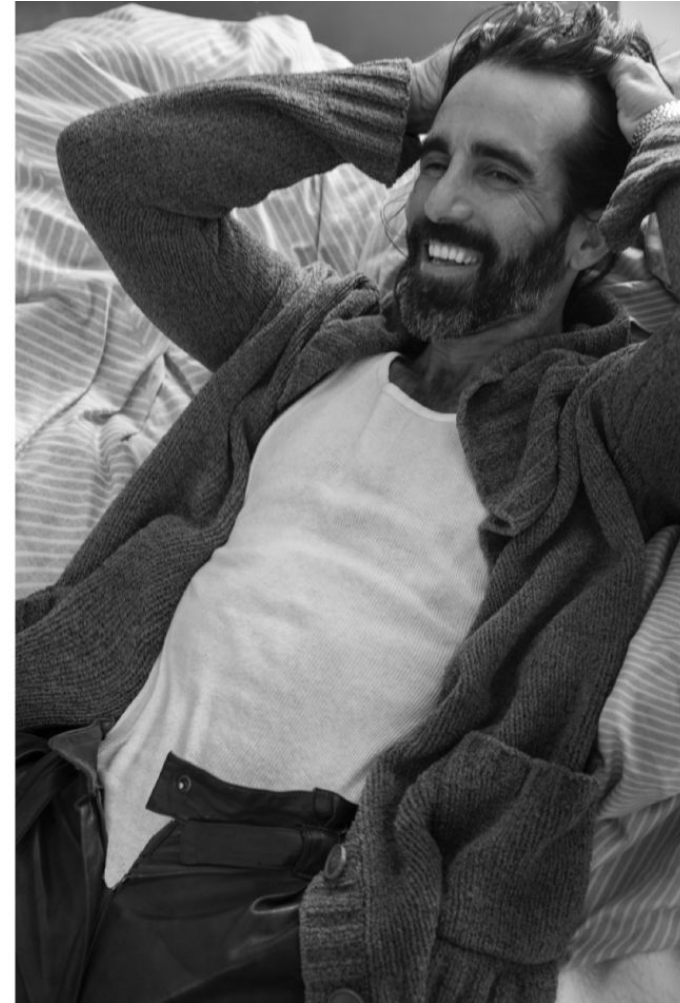


Michael O' Connor

Height : 6'3" | Waist : 32" | Inseam : 32" | Collar : 16" | Suit : L length / 40" us | Shoe : 13 us | Eyes : Brown | Hair : Brown

WIMBLEY

MANAGEMENT



Michael O' Connor

Height : 6'3" | Waist : 32" | Inseam : 32" | Collar : 16" | Suit : L length / 40" us | Shoe : 13 us | Eyes : Brown | Hair : Brown

WIMBLEY

MANAGEMENT



Michael O' Connor

Height : 6'3" | Waist : 32" | Inseam : 32" | Collar : 16" | Suit : L length / 40" us | Shoe : 13 us | Eyes : Brown | Hair : Brown

WIMBLEY

MANAGEMENT



Michael O' Connor

Height : 6'3" | Waist : 32" | Inseam : 32" | Collar : 16" | Suit : L length / 40" us | Shoe : 13 us | Eyes : Brown | Hair : Brown