

WIMBLEY

MANAGEMENT



Adam Emerick

Height : 6'3" | Waist : 34" | Inseam : 34" | Collar : 18" | Shoe : 12 us | Eyes : Blue | Hair : Blonde

WIMBLEY

MANAGEMENT



Adam Emerick

Height : 6'3" | Waist : 34" | Inseam : 34" | Collar : 18" | Shoe : 12 us | Eyes : Blue | Hair : Blonde

WIMBLEY

MANAGEMENT

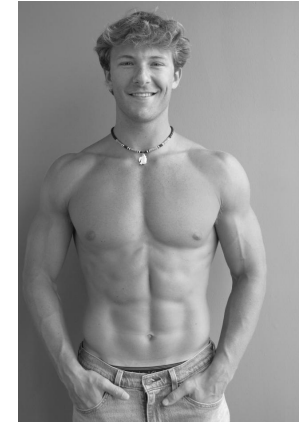


Adam Emerick

Height : 6'3" | Waist : 34" | Inseam : 34" | Collar : 18" | Shoe : 12 us | Eyes : Blue | Hair : Blonde

WIMBLEY

MANAGEMENT



Adam Emerick

Height : 6'3" | Waist : 34" | Inseam : 34" | Collar : 18" | Shoe : 12 us | Eyes : Blue | Hair : Blonde