

WIMBLEY

MANAGEMENT



Andrew Pribble

Height : 6'3" | Chest : 40" | Waist : 29" | Inseam : 34" | Collar : 16" | Suit : L length / 40" us | Shoe : 11 us | Eyes : Brown | Hair : Brown

WIMBLEY

MANAGEMENT

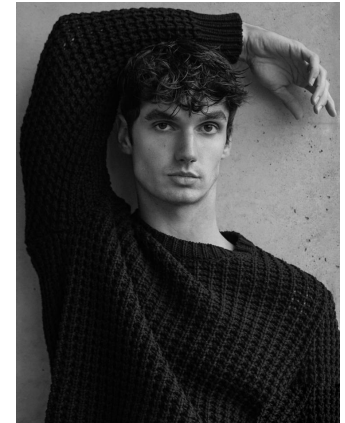
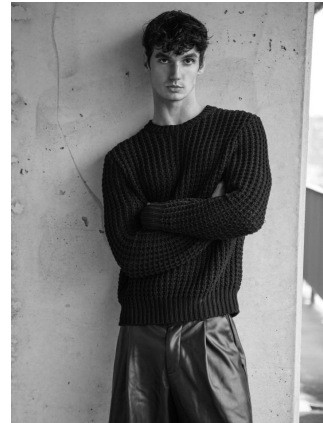


Andrew Pribble

Height : 6'3" | Chest : 40" | Waist : 29" | Inseam : 34" | Collar : 16" | Suit : L length / 40" us | Shoe : 11 us | Eyes : Brown | Hair : Brown

WIMBLEY

MANAGEMENT



Andrew Pribble

Height : 6'3" | Chest : 40" | Waist : 29" | Inseam : 34" | Collar : 16" | Suit : L length / 40" us | Shoe : 11 us | Eyes : Brown | Hair : Brown

WIMBLEY

MANAGEMENT



Andrew Pribble

Height : 6'3" | Chest : 40" | Waist : 29" | Inseam : 34" | Collar : 16" | Suit : L length / 40" us | Shoe : 11 us | Eyes : Brown | Hair : Brown

WIMBLEY

MANAGEMENT



Andrew Pribble

Height : 6'3" | Chest : 40" | Waist : 29" | Inseam : 34" | Collar : 16" | Suit : L length / 40" us | Shoe : 11 us | Eyes : Brown | Hair : Brown