

# WIMBLEY

MANAGEMENT



Cole Monahan

Height : 6'2" | Waist : 32" | Inseam : 34" | Collar : 16.5" | Suit : L length / 42" us | Shoe : 11.5 us | Eyes : Blue | Hair : Light Brown

# WIMBLEY

MANAGEMENT

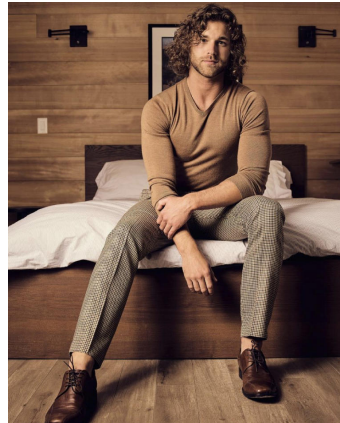


Cole Monahan

Height : 6'2" | Waist : 32" | Inseam : 34" | Collar : 16.5" | Suit : L length / 42" us | Shoe : 11.5 us | Eyes : Blue | Hair : Light Brown

# WIMBLEY

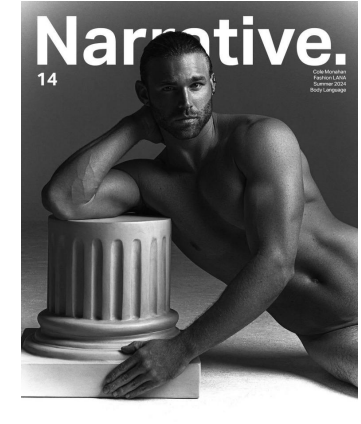
MANAGEMENT



Cole Monahan

Height : 6'2" | Waist : 32" | Inseam : 34" | Collar : 16.5" | Suit : L length / 42" us | Shoe : 11.5 us | Eyes : Blue | Hair : Light Brown

# WIMBLEY MANAGEMENT

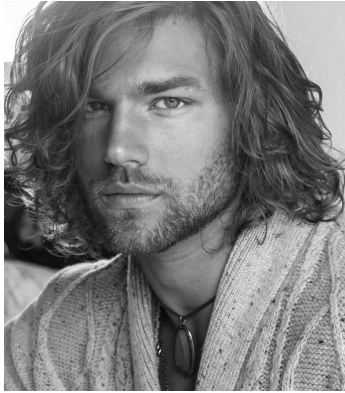


Cole Monahan

Height : 6'2" | Waist : 32" | Inseam : 34" | Collar : 16.5" | Suit : L length / 42" us | Shoe : 11.5 us | Eyes : Blue | Hair : Light Brown

# WIMBLEY

MANAGEMENT

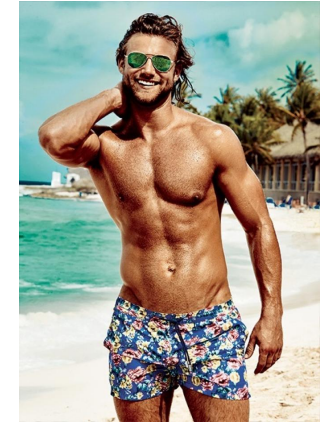


Cole Monahan

Height : 6'2" | Waist : 32" | Inseam : 34" | Collar : 16.5" | Suit : L length / 42" us | Shoe : 11.5 us | Eyes : Blue | Hair : Light Brown

# WIMBLEY

MANAGEMENT



Cole Monahan

Height : 6'2" | Waist : 32" | Inseam : 34" | Collar : 16.5" | Suit : L length / 42" us | Shoe : 11.5 us | Eyes : Blue | Hair : Light Brown