

WIMBLEY

MANAGEMENT

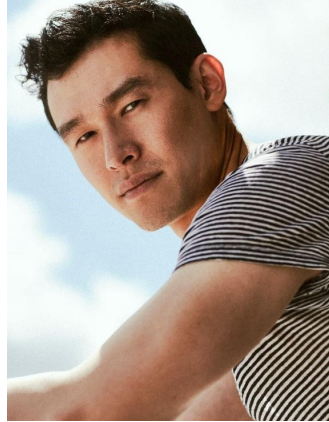
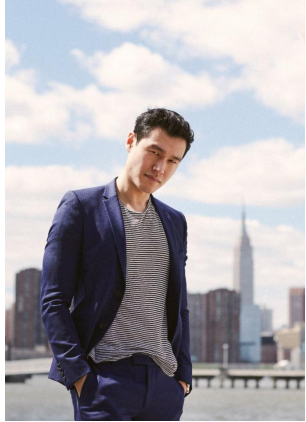


Dan Chen

Height : 6'0" | Chest : 39" | Waist : 32" | Inseam : 32" | Collar : 15" | Suit : R length / 40" us | Shoe : 10 us | Eyes : Black | Hair : Black

WIMBLEY

MANAGEMENT



Dan Chen

Height : 6'0" | Chest : 39" | Waist : 32" | Inseam : 32" | Collar : 15" | Suit : R length / 40" us | Shoe : 10 us | Eyes : Black | Hair : Black

WIMBLEY

MANAGEMENT



Dan Chen

Height : 6'0" | Chest : 39" | Waist : 32" | Inseam : 32" | Collar : 15" | Suit : R length / 40" us | Shoe : 10 us | Eyes : Black | Hair : Black

WIMBLEY

MANAGEMENT



Dan Chen

Height : 6'0" | Chest : 39" | Waist : 32" | Inseam : 32" | Collar : 15" | Suit : R length / 40" us | Shoe : 10 us | Eyes : Black | Hair : Black

WIMBLEY

MANAGEMENT



Dan Chen

Height : 6'0" | Chest : 39" | Waist : 32" | Inseam : 32" | Collar : 15" | Suit : R length / 40" us | Shoe : 10 us | Eyes : Black | Hair : Black