

WIMBLEY

MANAGEMENT



Frank Areitio

Height : 6'0.5" | Chest : 38" | Waist : 32" | Inseam : 32" | Suit : R length / 40" us | Shoe : 12 us | Eyes : Green | Hair : Brown

WIMBLEY

MANAGEMENT

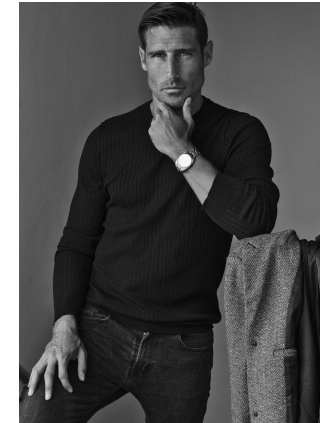
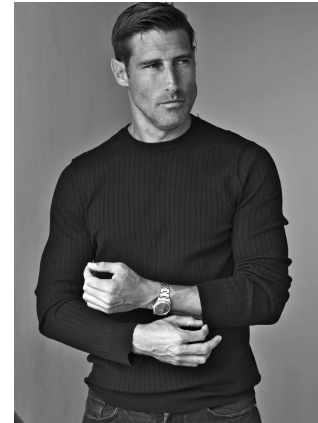


Frank Areitio

Height : 6'0.5" | Chest : 38" | Waist : 32" | Inseam : 32" | Suit : R length / 40" us | Shoe : 12 us | Eyes : Green | Hair : Brown

WIMBLEY

MANAGEMENT

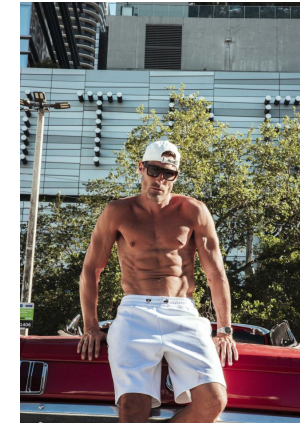
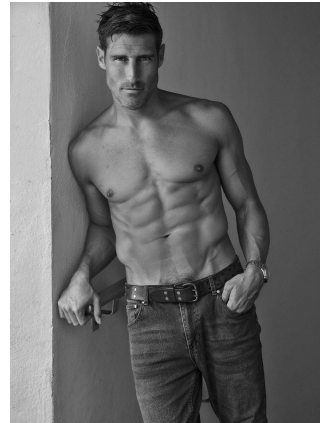
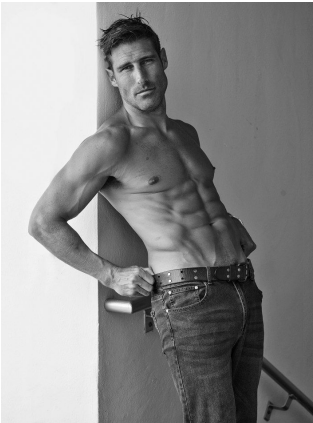


Frank Areitio

Height : 6'0.5" | Chest : 38" | Waist : 32" | Inseam : 32" | Suit : R length / 40" us | Shoe : 12 us | Eyes : Green | Hair : Brown

WIMBLEY

MANAGEMENT

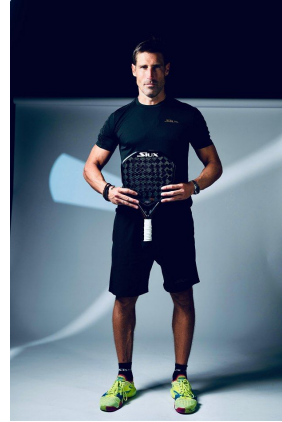


Frank Areitio

Height : 6'0.5" | Chest : 38" | Waist : 32" | Inseam : 32" | Suit : R length / 40" us | Shoe : 12 us | Eyes : Green | Hair : Brown

WIMBLEY

MANAGEMENT



Frank Areitio

Height : 6'0.5" | Chest : 38" | Waist : 32" | Inseam : 32" | Suit : R length / 40" us | Shoe : 12 us | Eyes : Green | Hair : Brown