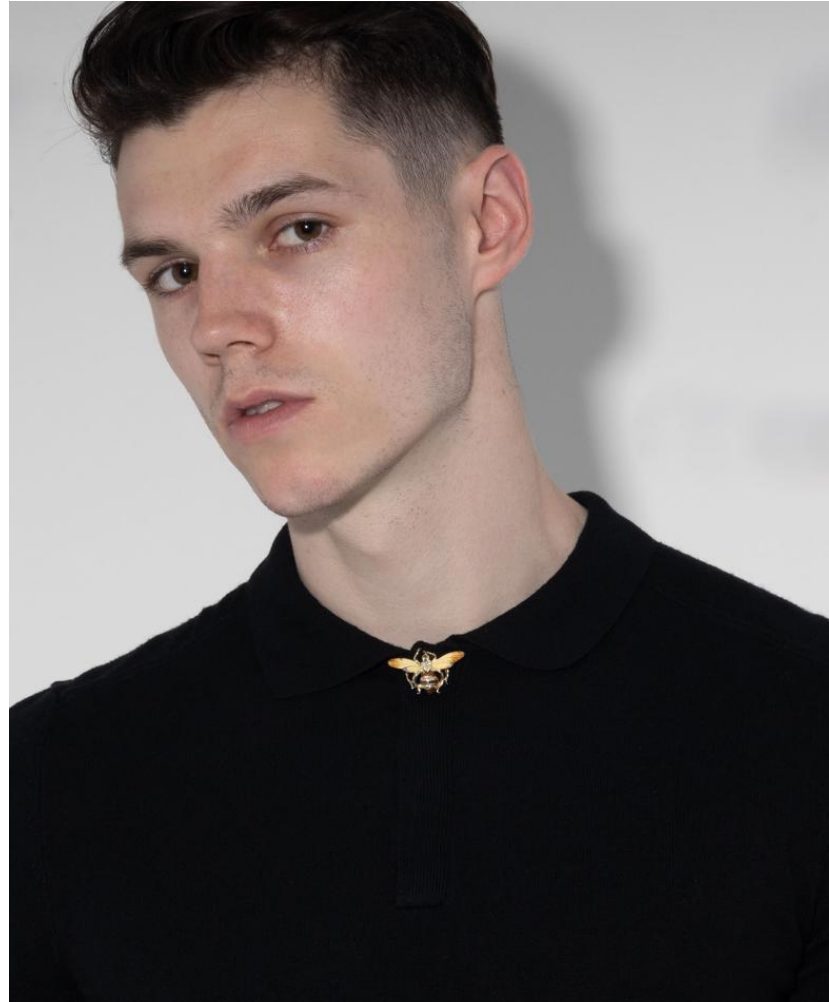


WIMBLEY

MANAGEMENT

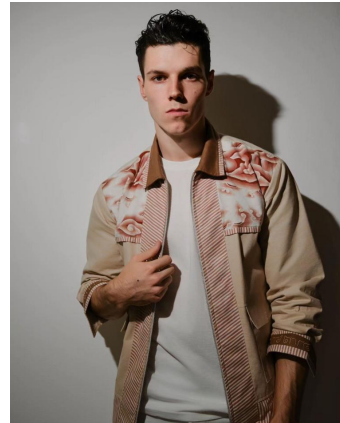
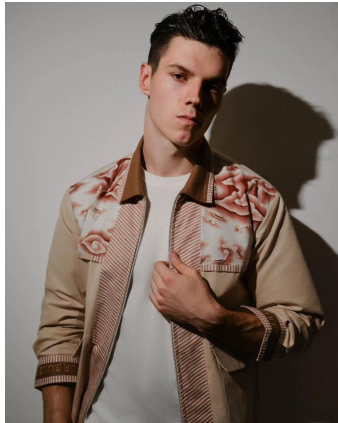
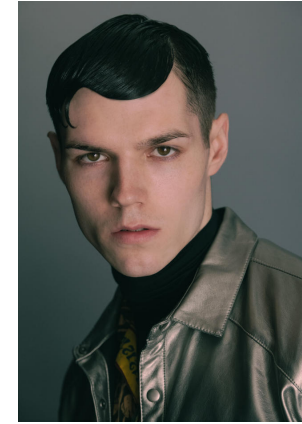
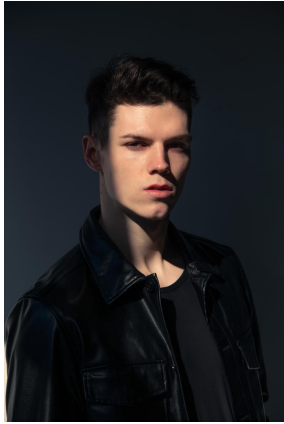


Jake Hillburn

Height : 6'1" | Chest : 40" | Waist : 31" | Inseam : 32" | Collar : 16" | Suit : R length / 40" us | Shoe : 12.5 us | Eyes : Brown | Hair : Brown

WIMBLEY

MANAGEMENT

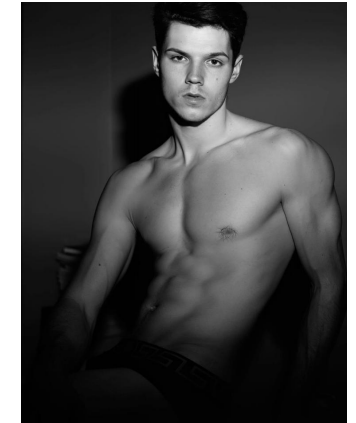
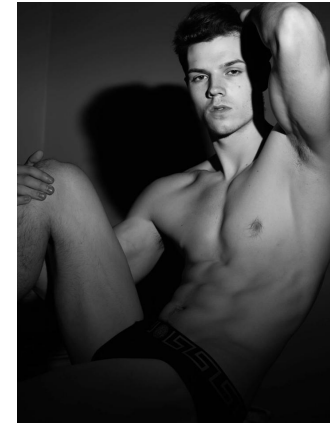
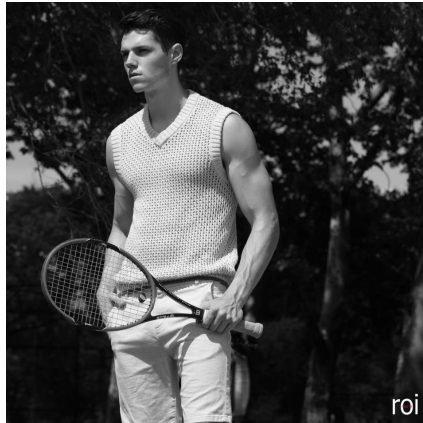
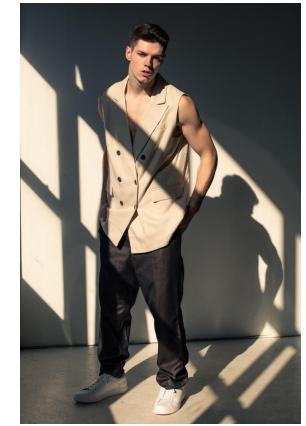


Jake Hillburn

Height : 6'1" | Chest : 40" | Waist : 31" | Inseam : 32" | Collar : 16" | Suit : R length / 40" us | Shoe : 12.5 us | Eyes : Brown | Hair : Brown

WIMBLEY

MANAGEMENT

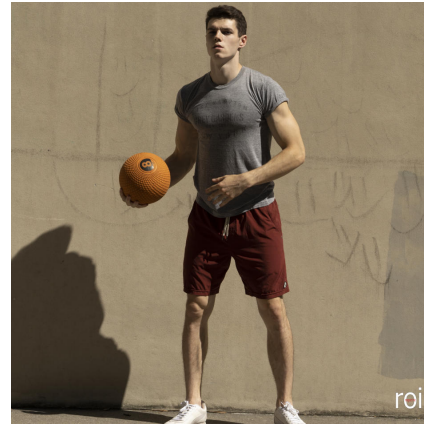
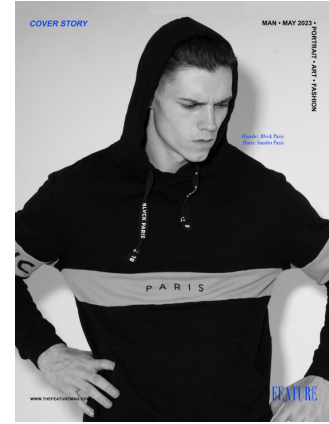


Jake Hillburn

Height : 6'1" | Chest : 40" | Waist : 31" | Inseam : 32" | Collar : 16" | Suit : R length / 40" us | Shoe : 12.5 us | Eyes : Brown | Hair : Brown

WIMBLEY

MANAGEMENT



Jake Hillburn

Height : 6'1" | Chest : 40" | Waist : 31" | Inseam : 32" | Collar : 16" | Suit : R length / 40" us | Shoe : 12.5 us | Eyes : Brown | Hair : Brown

WIMBLEY

MANAGEMENT



Jake Hillburn

Height : 6'1" | Chest : 40" | Waist : 31" | Inseam : 32" | Collar : 16" | Suit : R length / 40" us | Shoe : 12.5 us | Eyes : Brown | Hair : Brown