

WIMBLEY

MANAGEMENT

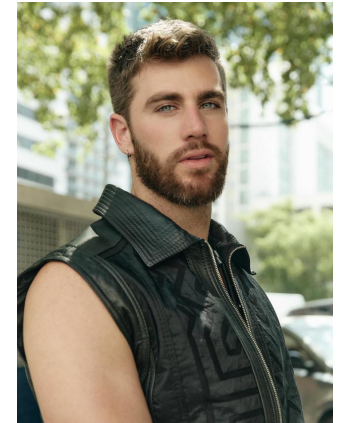
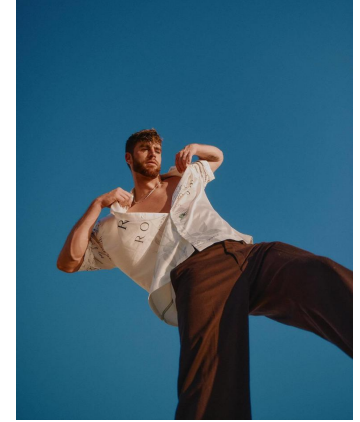
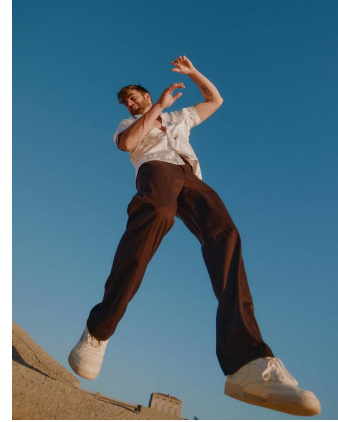


Jay Gould

Height : 6'1" | Chest : 41" | Waist : 32" | Inseam : 32" | Collar : 16" | Suit : R length / 41" us | Shoe : 11 us | Eyes : Blue | Hair : Brown

WIMBLEY

MANAGEMENT

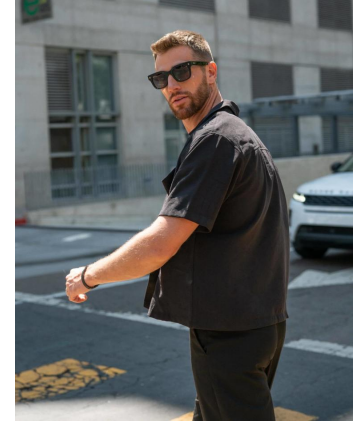
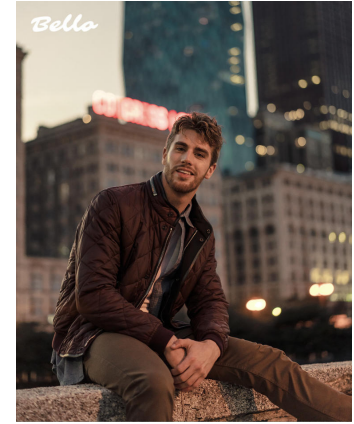
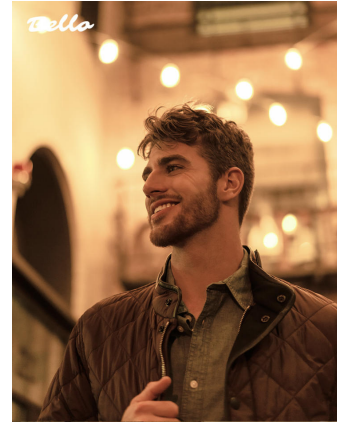


Jay Gould

Height : 6'1" | Chest : 41" | Waist : 32" | Inseam : 32" | Collar : 16" | Suit : R length / 41" us | Shoe : 11 us | Eyes : Blue | Hair : Brown

WIMBLEY

MANAGEMENT

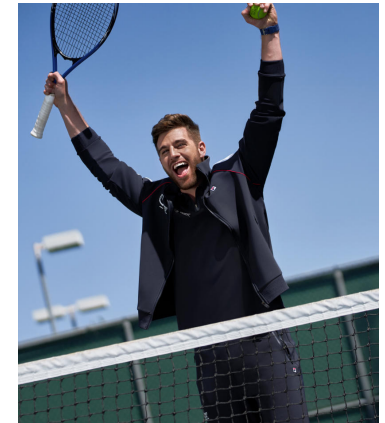


Jay Gould

Height : 6'1" | Chest : 41" | Waist : 32" | Inseam : 32" | Collar : 16" | Suit : R length / 41" us | Shoe : 11 us | Eyes : Blue | Hair : Brown

WIMBLEY

MANAGEMENT

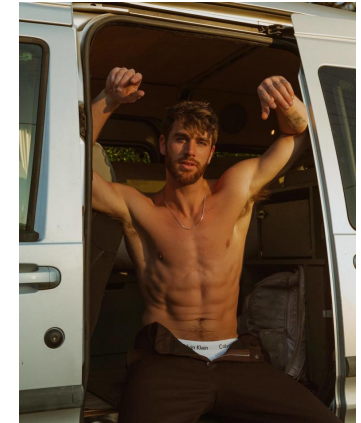
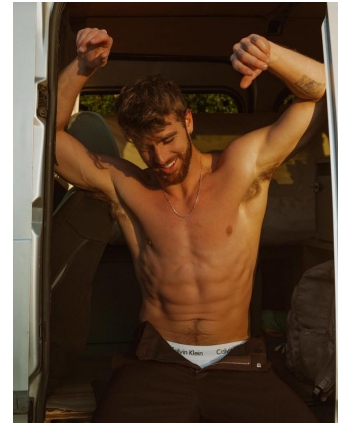
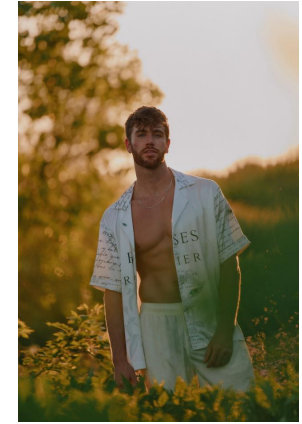


Jay Gould

Height : 6'1" | Chest : 41" | Waist : 32" | Inseam : 32" | Collar : 16" | Suit : R length / 41" us | Shoe : 11 us | Eyes : Blue | Hair : Brown

WIMBLEY

MANAGEMENT



Jay Gould

Height : 6'1" | Chest : 41" | Waist : 32" | Inseam : 32" | Collar : 16" | Suit : R length / 41" us | Shoe : 11 us | Eyes : Blue | Hair : Brown

WIMBLEY

MANAGEMENT



Jay Gould

Height : 6'1" | Chest : 41" | Waist : 32" | Inseam : 32" | Collar : 16" | Suit : R length / 41" us | Shoe : 11 us | Eyes : Blue | Hair : Brown

WIMBLEY

MANAGEMENT



Jay Gould

Height : 6'1" | Chest : 41" | Waist : 32" | Inseam : 32" | Collar : 16" | Suit : R length / 41" us | Shoe : 11 us | Eyes : Blue | Hair : Brown