

WIMBLEY

MANAGEMENT

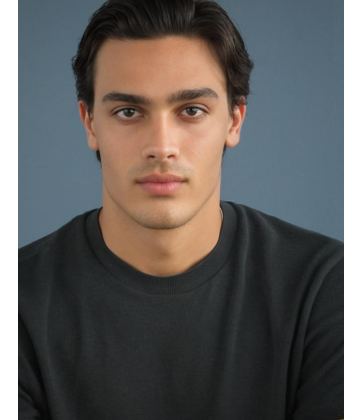


Jayden Bourgade

Height : 6'2" | Waist : 32" | Inseam : 32" | Collar : 15" | Suit : L length / 40" us | Shoe : 11 us | Eyes : Brown | Hair : Brown

WIMBLEY

MANAGEMENT

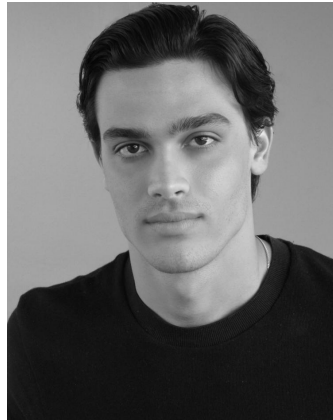
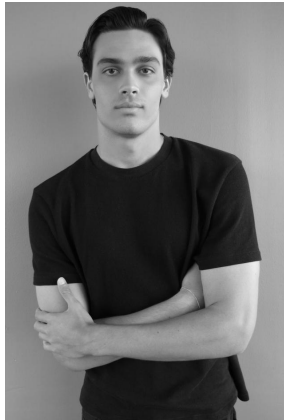
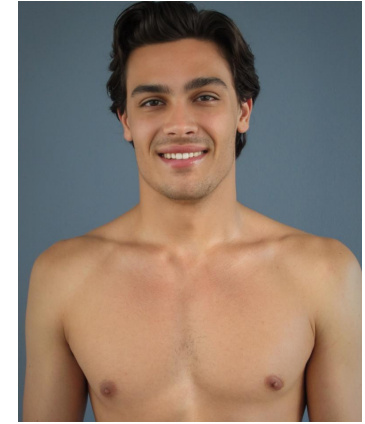
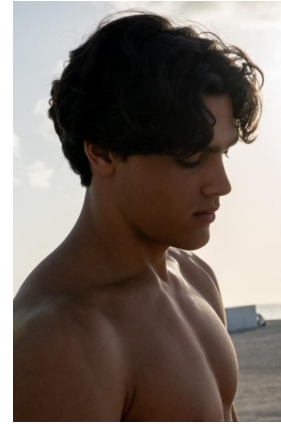


Jayden Bourgade

Height : 6'2" | Waist : 32" | Inseam : 32" | Collar : 15" | Suit : L length / 40" us | Shoe : 11 us | Eyes : Brown | Hair : Brown

WIMBLEY

MANAGEMENT



Jayden Bourgade

Height : 6'2" | Waist : 32" | Inseam : 32" | Collar : 15" | Suit : L length / 40" us | Shoe : 11 us | Eyes : Brown | Hair : Brown