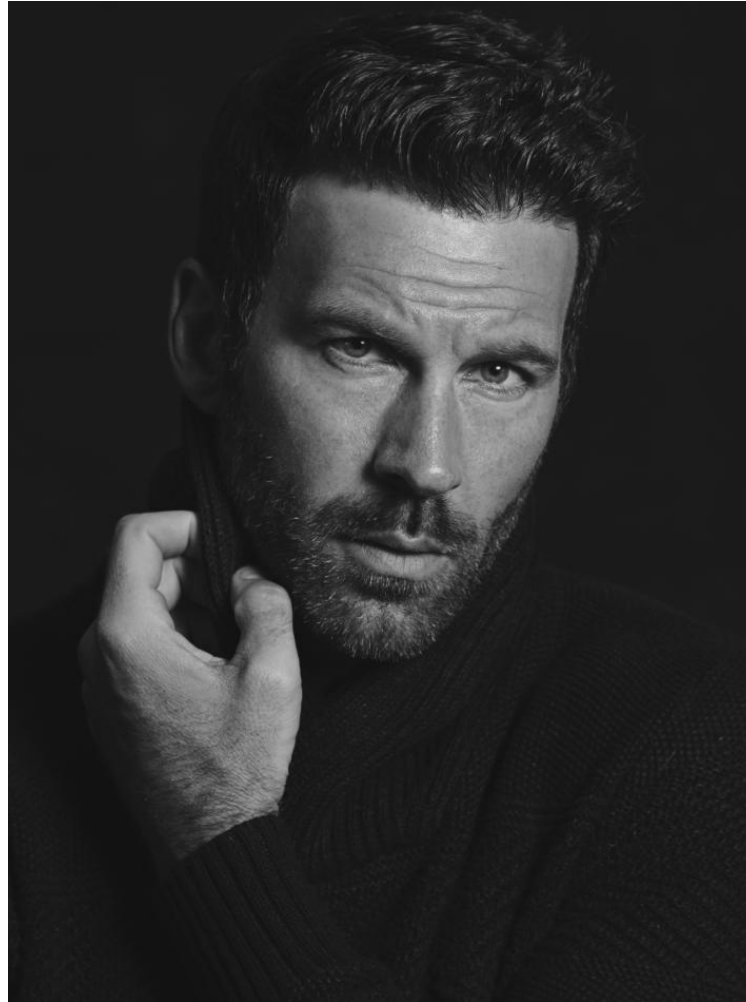


# WIMBLEY

MANAGEMENT

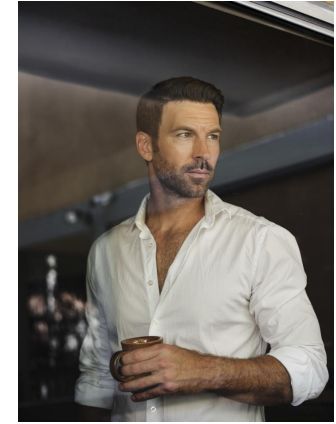


Jon James White

Height : 6'2" | Waist : 32" | Inseam : 32" | Suit : R length / 40" us | Shoe : 12 us | Eyes : Blue | Hair : Brown

# WIMBLEY

MANAGEMENT

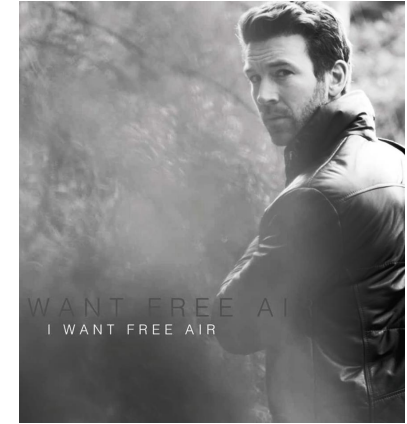


Jon James White

Height : 6'2" | Waist : 32" | Inseam : 32" | Suit : R length / 40" us | Shoe : 12 us | Eyes : Blue | Hair : Brown

# WIMBLEY

MANAGEMENT

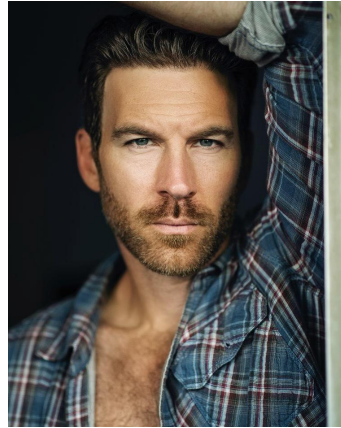


Jon James White

Height : 6'2" | Waist : 32" | Inseam : 32" | Suit : R length / 40" us | Shoe : 12 us | Eyes : Blue | Hair : Brown

# WIMBLEY

MANAGEMENT



**Jon James White**

Height : 6'2" | Waist : 32" | Inseam : 32" | Suit : R length / 40" us | Shoe : 12 us | Eyes : Blue | Hair : Brown