

# WIMBLEY

MANAGEMENT

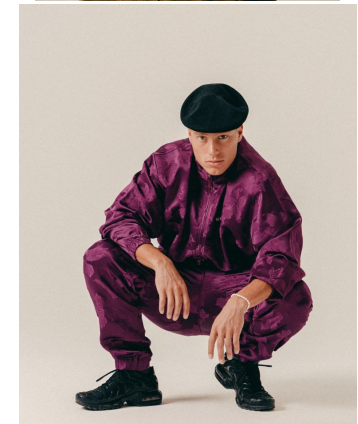
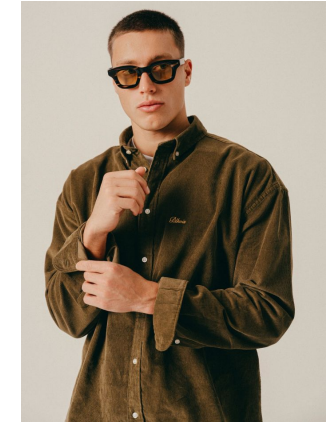
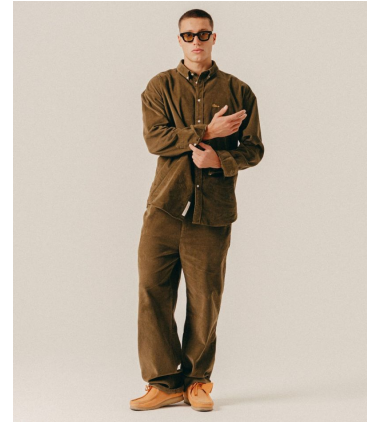


Paul Melcer

Height : 6'1" | Waist : 32" | Inseam : 32" | Collar : 16" | Suit : L length / 40" us | Shoe : 10 us | Eyes : Green/Brown | Hair : Brown

# WIMBLEY

MANAGEMENT

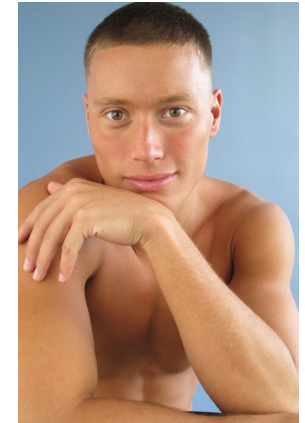


Paul Melcer

Height : 6'1" | Waist : 32" | Inseam : 32" | Collar : 16" | Suit : L length / 40" us | Shoe : 10 us | Eyes : Green/Brown | Hair : Brown

# WIMBLEY

MANAGEMENT

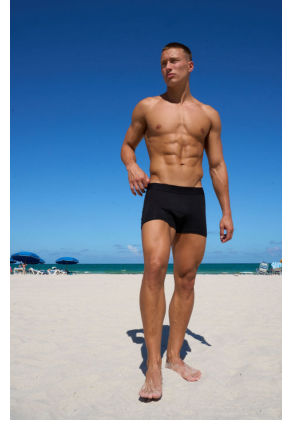


Paul Melcer

Height : 6'1" | Waist : 32" | Inseam : 32" | Collar : 16" | Suit : L length / 40" us | Shoe : 10 us | Eyes : Green/Brown | Hair : Brown

# WIMBLEY

MANAGEMENT



**Paul Melcer**

Height : 6'1" | Waist : 32" | Inseam : 32" | Collar : 16" | Suit : L length / 40" us | Shoe : 10 us | Eyes : Green/Brown | Hair : Brown